

PROJECT FACT SHEET

SR 836/Dolphin Expressway Southwest Extension

MDX Project No. 83618

Project Overview

MDX completed a Concept Report in 2008 to evaluate a new transportation corridor extending SR 836/Dolphin Expressway from its current terminus at SW 137th Avenue and approximately SW 8th Street southwest to SW 136th Street in West Kendall. The corridor is envisioned as a multimodal corridor, including a limited access highway and the potential to incorporate transit services and bike paths. Interchanges may be limited to only major arterials, i.e. SW 40th Street (Bird Road), SW 88th Street (Kendall Drive), SW 104th Street (Killian Parkway), and SW 136th Street. The key is to design a cross section that relieves traffic from this area and provides a valid mobility option while limiting further western expansion of urban development.

Project Limits

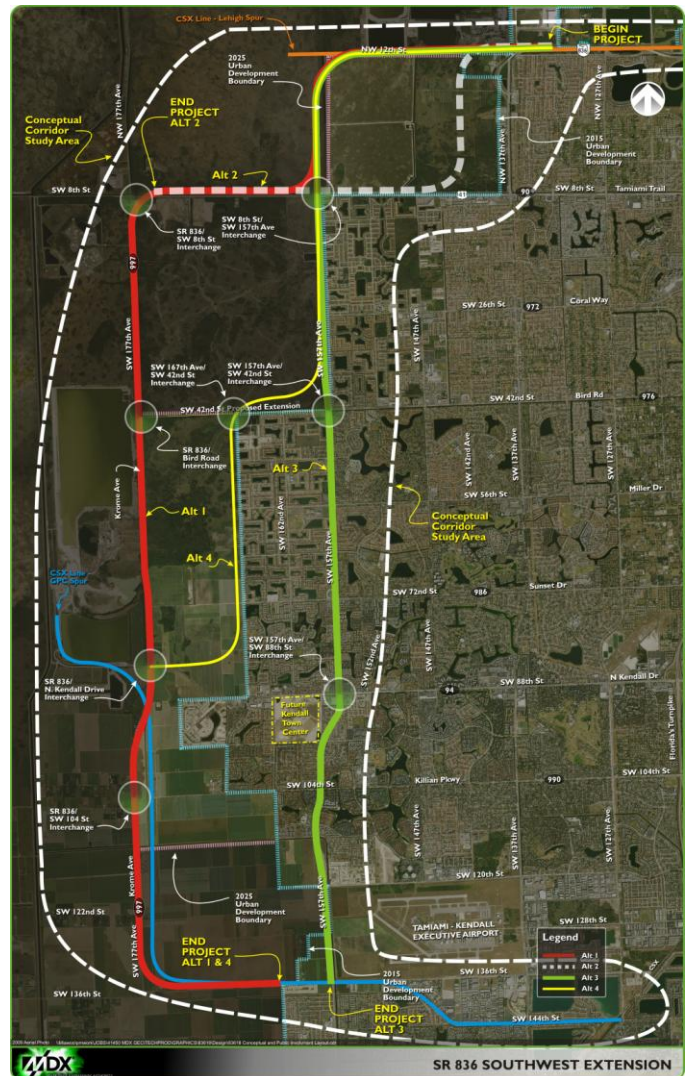
The proposed study area is located within unincorporated Miami-Dade County and is roughly bounded by NW 12th Street to the north, SW 136th Street to the south, SW 152 Avenue to the east, and SW 177th Avenue (Krome Avenue) to the west.

Project Schedule & Public Involvement

An Environmental Impact Statement (EIS) will commence in the summer of 2012 to further evaluate the need and benefits of this project. The Study will evaluate alternative corridors and alignments, as well as potential environmental impacts and mitigation options.

As part of the 2008 Concept Report, MDX performed preliminary public outreach with key homeowners associations, as well as with Community Councils and other civic associations in the area. As a result, an additional alternative was identified by the public, which suggests a southernmost end-point at Kendall Drive.

Project coordination with all pertinent environmental agencies will continue through the Department of Transportation's Efficient Transportation Decision Making (ETDM) Process throughout the duration of the study. MDX is committed to evaluating all alternatives while avoiding or minimizing any potential environmental impact that may surface within the proposed alignments.



PROJECT FACT SHEET

SR 836/Dolphin Expressway Southwest Extension

MDX Project No. 83618

Project Background

The southwest area of Miami-Dade County has experienced unprecedented growth over the last 20 years, but transportation infrastructure improvements have not kept pace with growth patterns or increased transportation demands. The Turnpike and the Palmetto Expressway cannot by themselves address the capacity needed to provide mobility to the local communities. Traffic flow from developments in the western edges of Miami-Dade County is limited to a few major east-west arterial roads, connecting to highly congested north-south major highways located east of these communities. Existing demand on the roadway network is exceeding capacity resulting in operational deficiencies, which translate into longer commutes and a negative impact on the quality-of-life for Miami-Dade residents and businesses.

This project would include a new north-south express connection to link West Kendall with the Airport West area and central Miami-Dade County through SR 836. The project is an alternative to improve connectivity, enhance mobility, provide an opportunity for express transit service and relieve congestion on the existing highways in the area.

Project Benefits

The proposed SR 836 Southwest Extension would provide a linkage between residential communities and businesses in southwest Miami-Dade with the urban centers to the east. It will also enhance north-south and east-west mobility and relieve congestion on arterials and major roadways by providing an alternative to the Turnpike and the Palmetto.

The extension is projected to be a multi-modal transportation corridor with the possibility of incorporating mass transit and adjacent bike paths. It could also serve as an additional hurricane evacuation route for the County. Due to the limited access nature of the roadway, it can also act as a physical barrier to discourage urban sprawl and encroachment into the Everglades area.

For More Information: Contact: Tere Garcia, Public Information Officer
Phone: (786) 277-9292
E-mail: tgarcia@mdxway.com

The Miami-Dade Expressway Authority (MDX) operates and maintains five expressways: SR 112/Airport Expressway, SR 836/Dolphin Expressway, SR 874/Don Shula Expressway, SR 878/Snapper Creek Expressway, and SR 924/Gratigny Parkway. MDX is funded almost entirely by toll revenue and is dedicated to moving Miami-Dade County forward by making your commute safer and more efficient.