

# Dolphin Station Park-and-Ride/Transit Terminal Facility Miami-Dade County, Florida

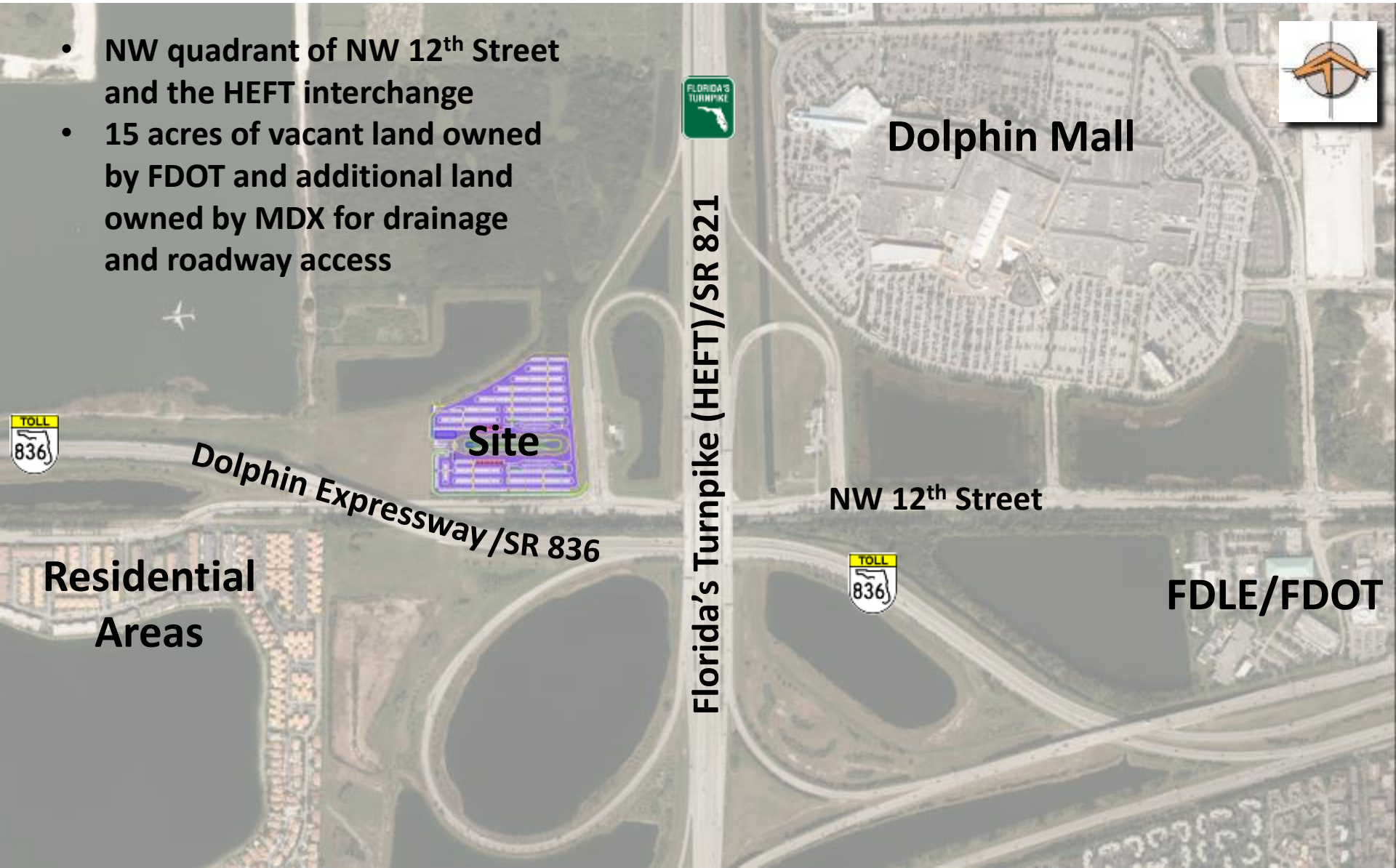


**Transportation Aesthetics Review Committee  
(TARC)  
January 6, 2016**

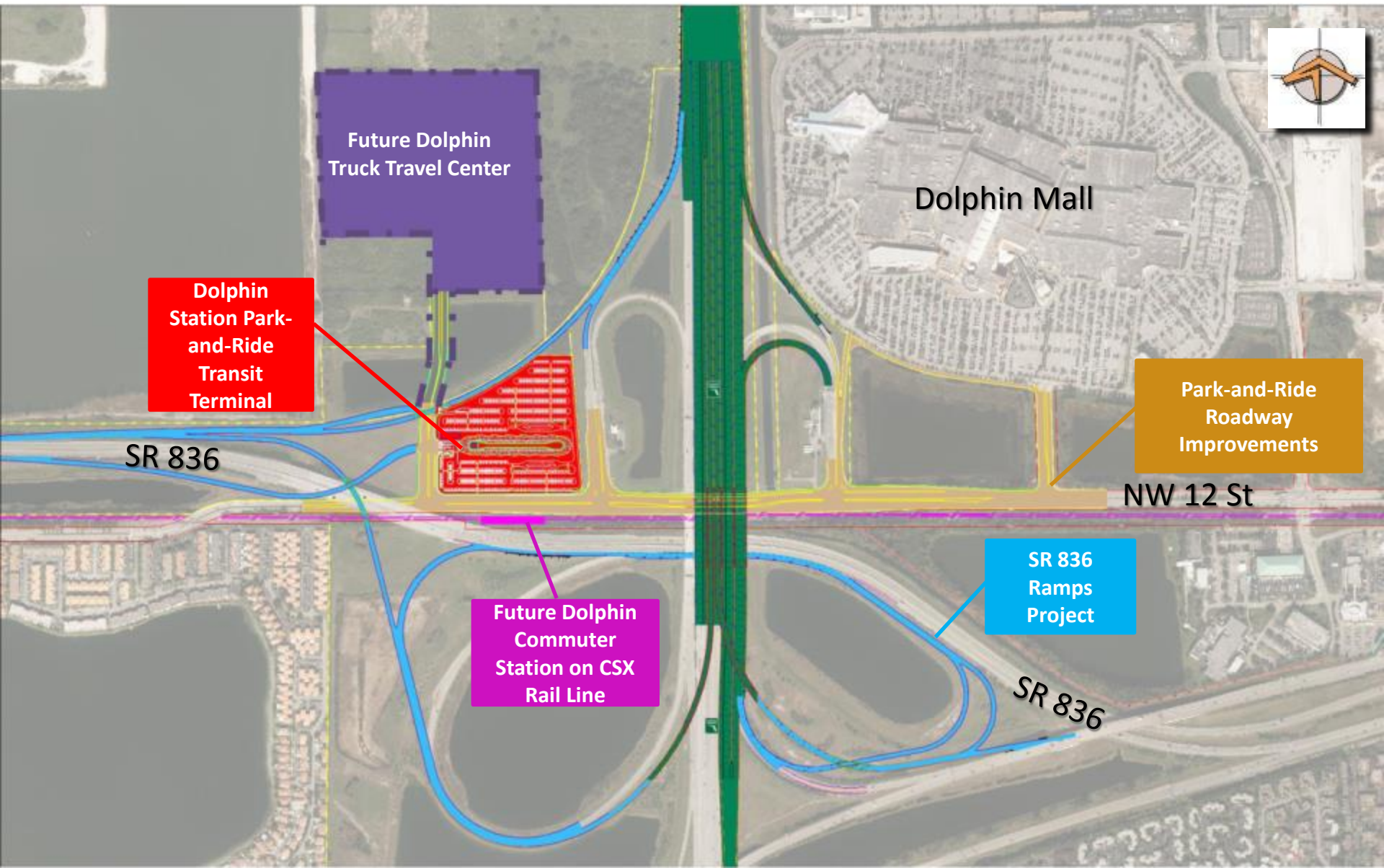


# Project Location

- NW quadrant of NW 12<sup>th</sup> Street and the HEFT interchange
- 15 acres of vacant land owned by FDOT and additional land owned by MDX for drainage and roadway access



# Context Area Map



Future Dolphin  
Truck Travel Center

Dolphin  
Station Park-  
and-Ride  
Transit  
Terminal

SR 836

Future Dolphin  
Commuter  
Station on CSX  
Rail Line

SR 836  
Ramps  
Project

Park-and-Ride  
Roadway  
Improvements

Dolphin Mall

NW 12 St

SR 836





# Project Overview

- **Create a transit hub for different modes of transportation in West Miami Dade County**
  - Support MDT's SR 836 Express Bus Service
  - Local bus routes serving the cities of Sweetwater and Doral and the Dolphin Mall
  - Support potential future east-west commuter rail service on CSX Line
- **Provide support to access major employment centers of Miami-Dade County**
  - Transit riders from Doral, Sweetwater and West Dade to:
    - Miami International Airport
    - Health District
    - Downtown and Brickell

# Agency Partnership

- **Miami-Dade County requested MDX to use their project delivery skill set to expedite all phases of the Dolphin Station Park-and-Ride/Transit Terminal Facility**
  - Partnership with MDT to support the SR 836 Express Bus Service and other transit services in the area
  - Project is financed by FDOT and Miami-Dade County



# Project Phases



# Facility Elements

- **849 long-term parking spaces**
  - 18 disabled parking spaces
  - 6 baby stroller parking spaces
  - 20 Carpool/Vanpool
  - 18 motorcycle and 20 bicycle spaces (not included in count)
- **“Kiss-and-Ride” drop-off areas**
  - 20 additional short-term parking spaces
- **12 bus bays**
- **10 bus layover bays**
- **Transit hub building**
- **Bus driver’s break lounge building**
- **Landscape, outdoor furniture, fencing, signage and lighting**

# SITE DESIGN CONCEPT



# Dolphin Station Plan



# Aerial View from Southwest Corner (Looking Northeast)



Dolphin Station Road

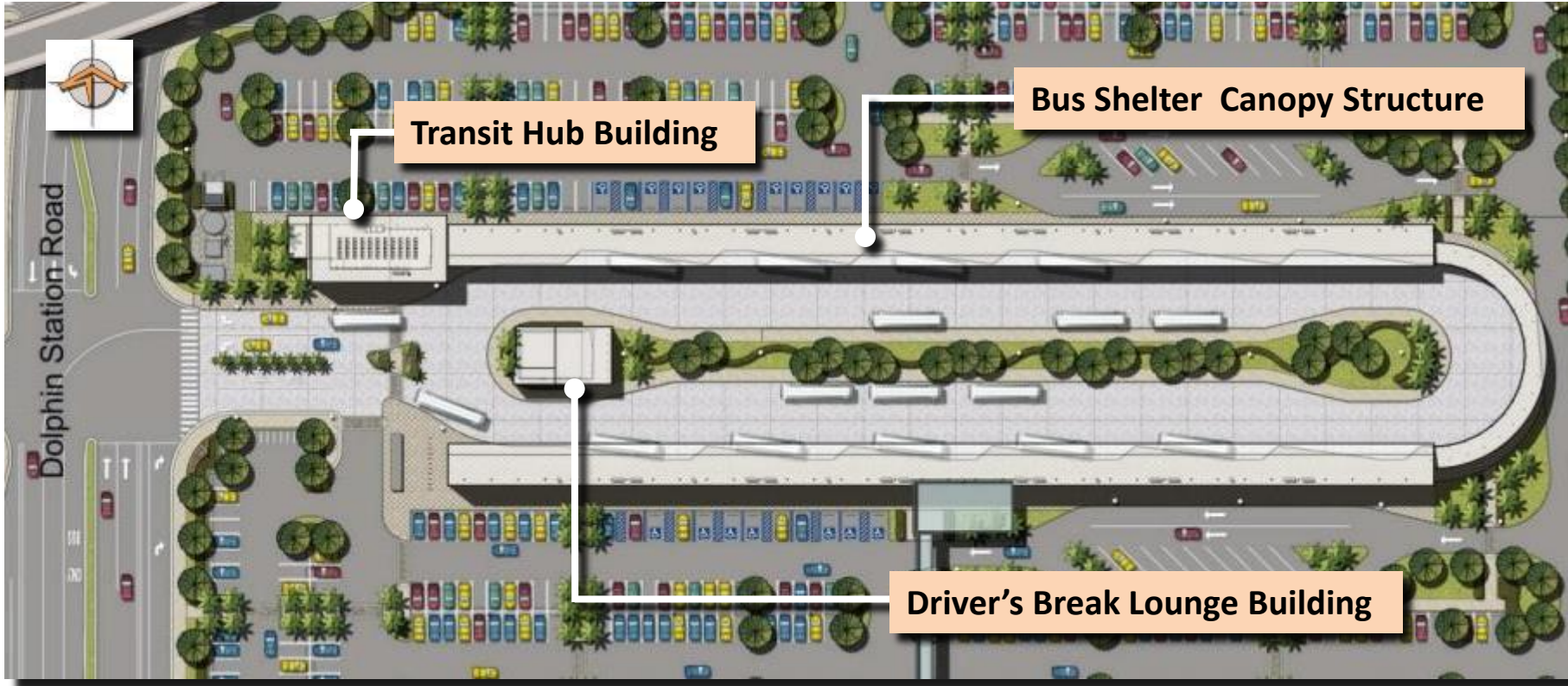
NW 12<sup>th</sup> Street



# Transit Terminal Plan

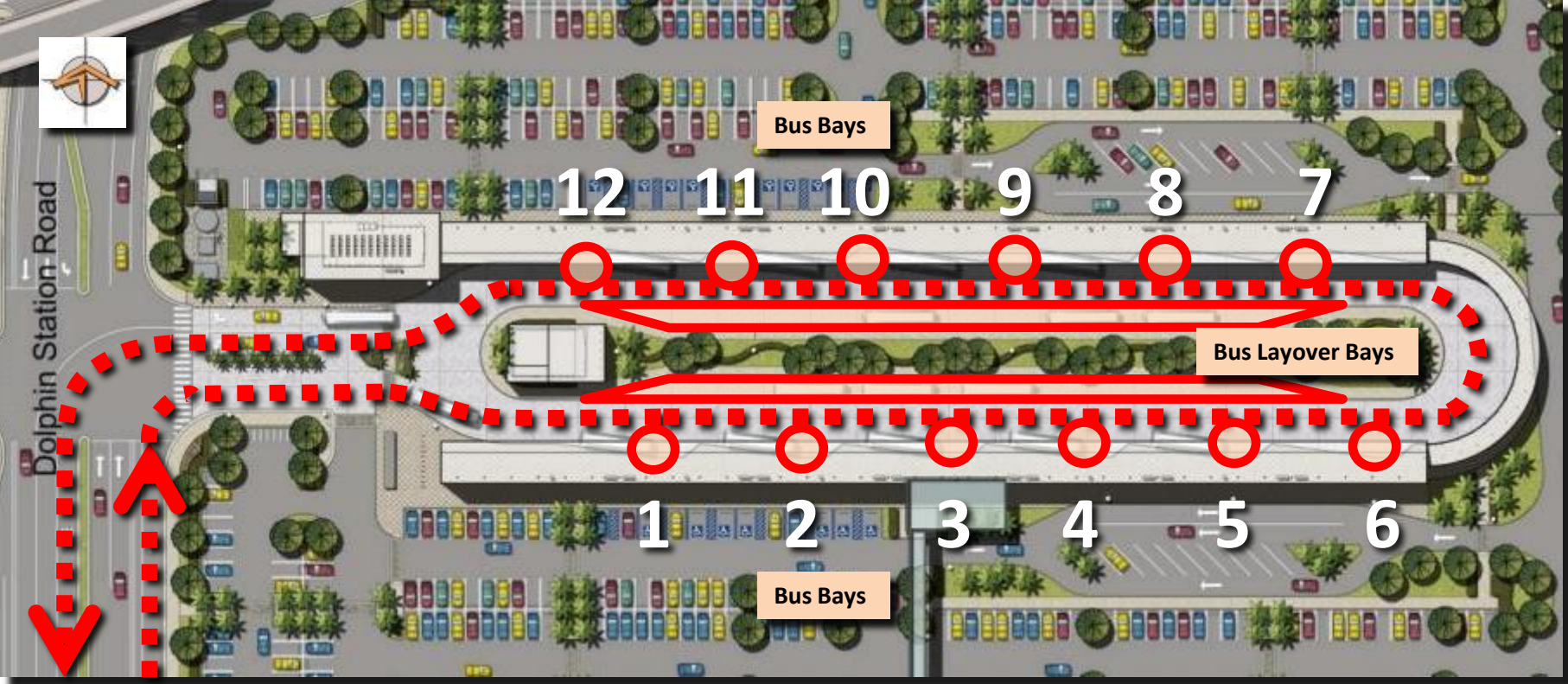


# Transit Terminal Plan





# Bus Circulation

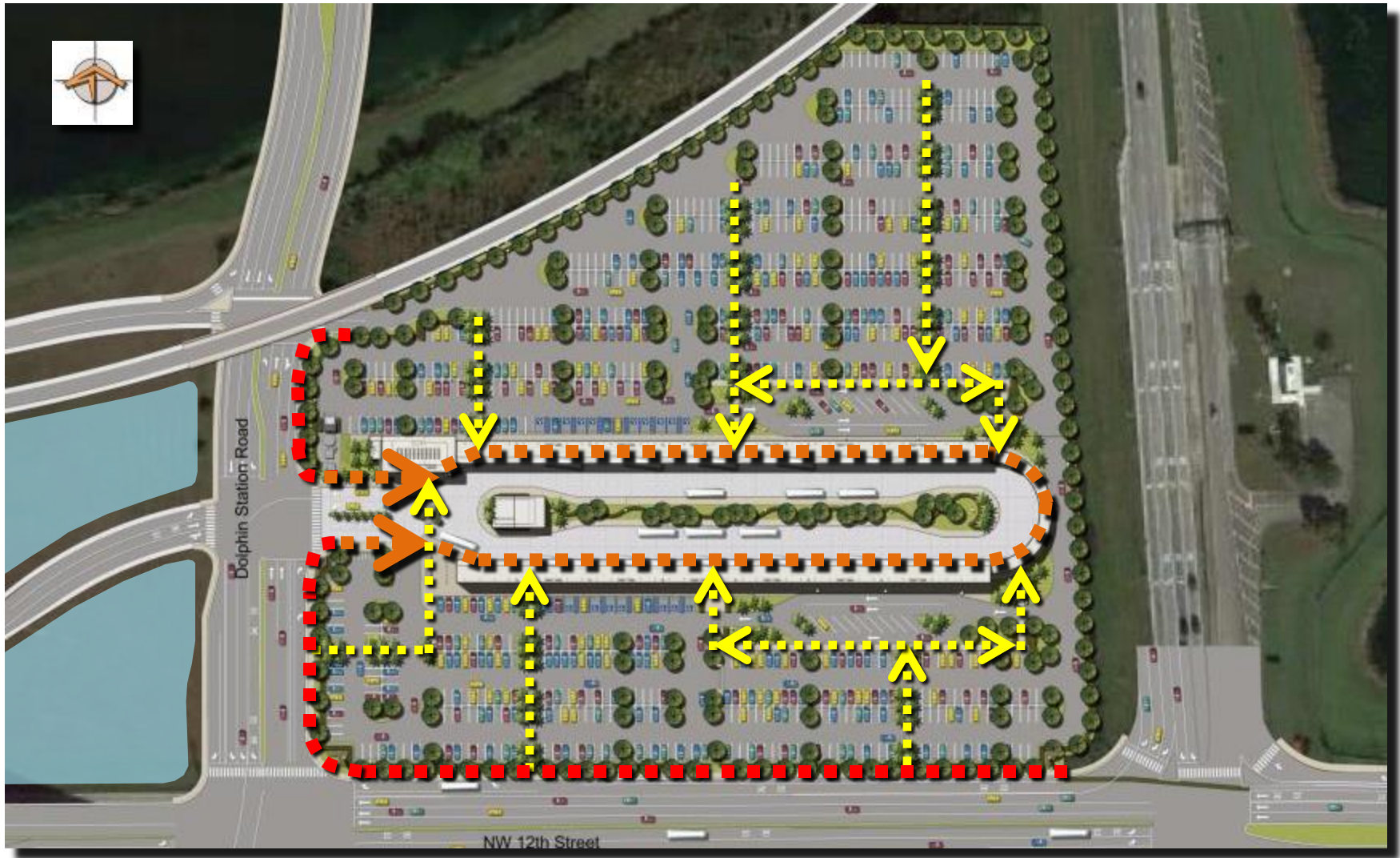




# Other Vehicle Circulation

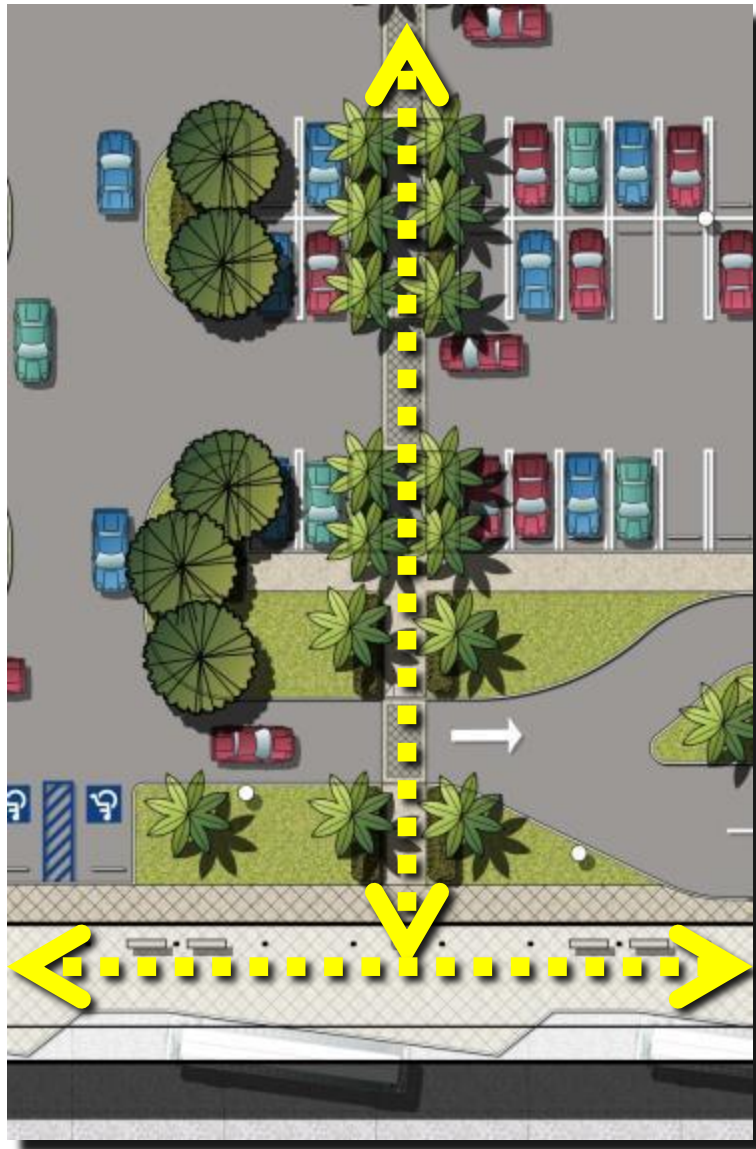


# Pedestrian Access & Circulation





# Parking Area Pedestrian Connections



## ○ Dedicated pedestrian walkways:

- Direct connection to Station Platform
- Strategically located
- Tree-lined
- Pedestrian paving
  - Pervious pavers
- Heavily landscaped
- Lighted

# Pedestrian Link to Potential Future Commuter Rail



- Accommodate connection to future transit station
- Elevated connection from Park-and-Ride/Transit Terminal Facility

# SITE LANDSCAPE DESIGN ELEMENTS



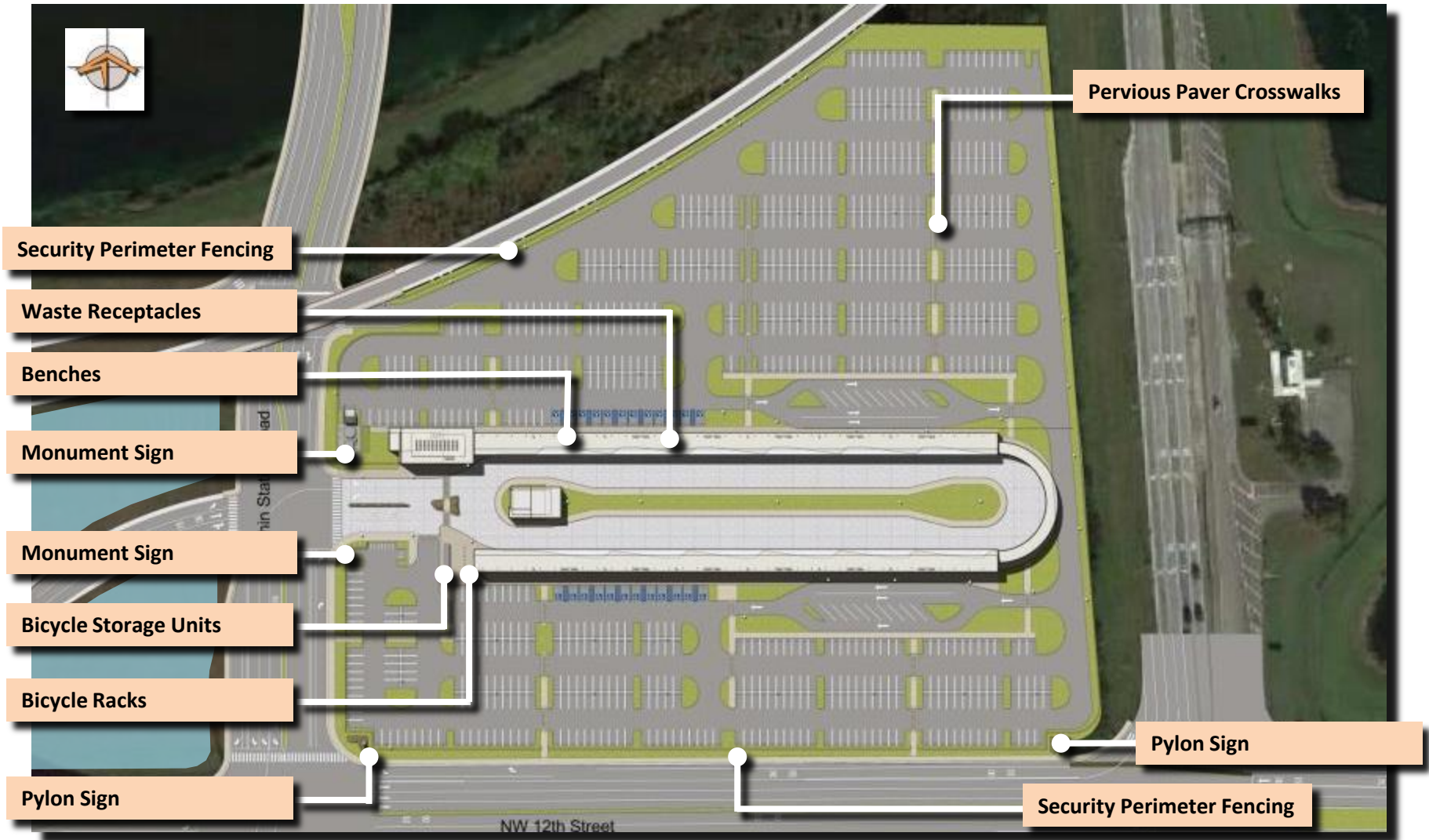
# Landscape Plan



# Landscape Palette & Quantities

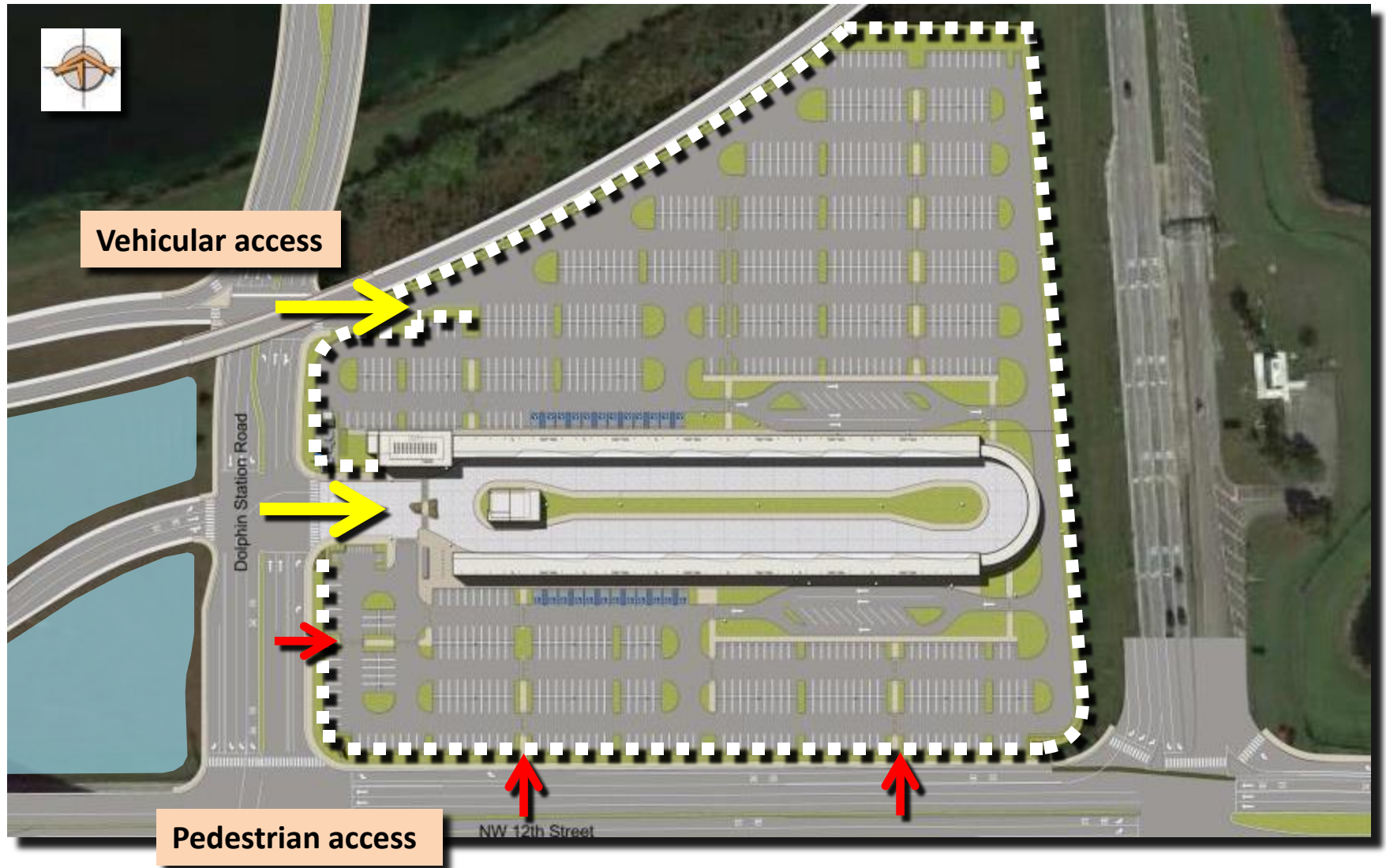
<b>Tree Varieties</b>	<b>224 total trees</b>
Live Oak	Quercus virginianaT
Jamaican Dogwood	Piscidia piscipula
Short Leaf Fig	Ficus citrifolia
Strangler Fig	Ficus aurea
Pitch Apple	Clusia rosa
<b>Palm Varieties</b>	<b>178 total palms</b>
Silver Bismarck Palm	Bismarckia nobilis 'Silver'
Sylvester Date Palm	Phoenix sylvestris
Cabbage Palm	Sabal palmetto
Florida Thatch Palm	Thrinax radiata
<b>Screen Hedge Varieties</b>	<b>3,054 LF</b>
Green Cocoplum	Chrysobalanus icaco
Silver Buttonwood	Conocarpus erectus sericeus
Bay Cedar	Suriana maritima
<b>Medium/Large Shrub</b>	
Bromeliad	Aechmea blanchetiana
Bougainvillea sp.	Bougainvillea
Green Cocoplum	Chrysobalanus icaco
Silver Buttonwood	Conocarpus erectus sericeus
Necklace Pod	Sophora tomentosa
Bay Cedar	Suriana maritima
<b>Small Shrubs/Groundcover</b>	
Golden Creeper	Ernodea littoralis
Beach Dune Sunflower	Helianthus debilis
Spider Lily	Hymenocallis latifolia
Railroad Vine	Ipomoea pes-caprae
<b>Sod</b>	
Bahia Sod	Paspalum notatum

# Hardscape Plan

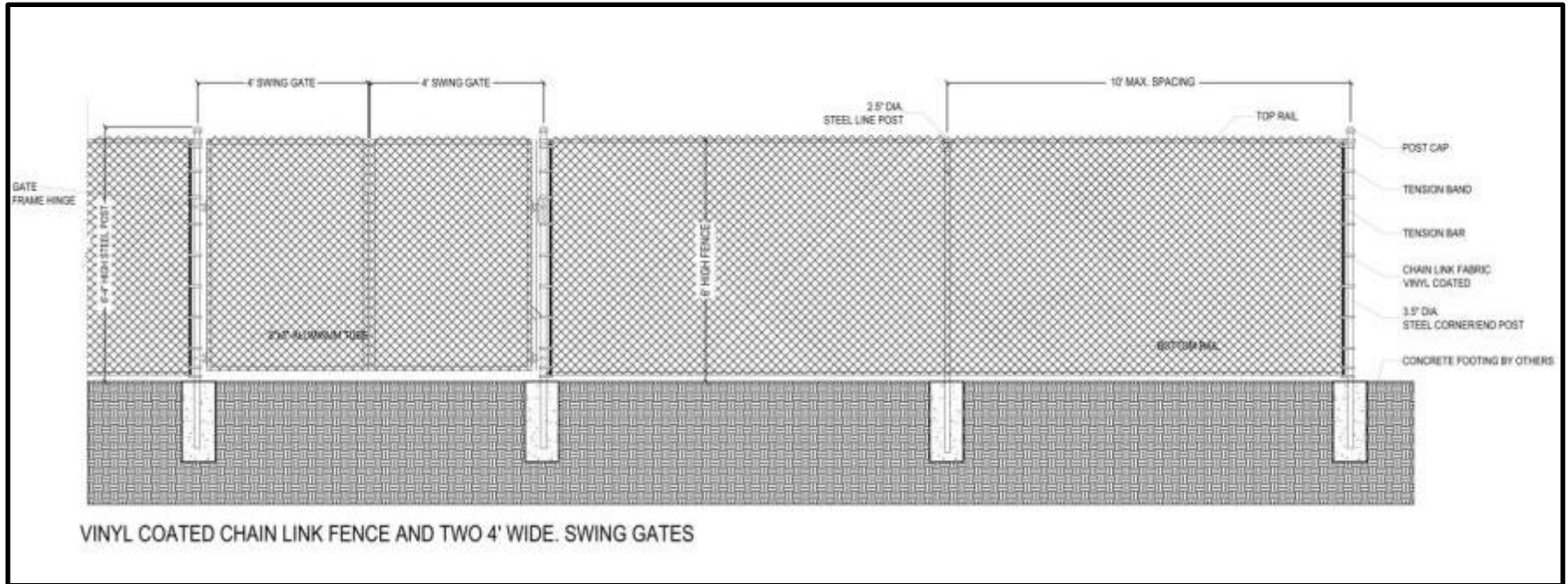




# Security Perimeter Fencing



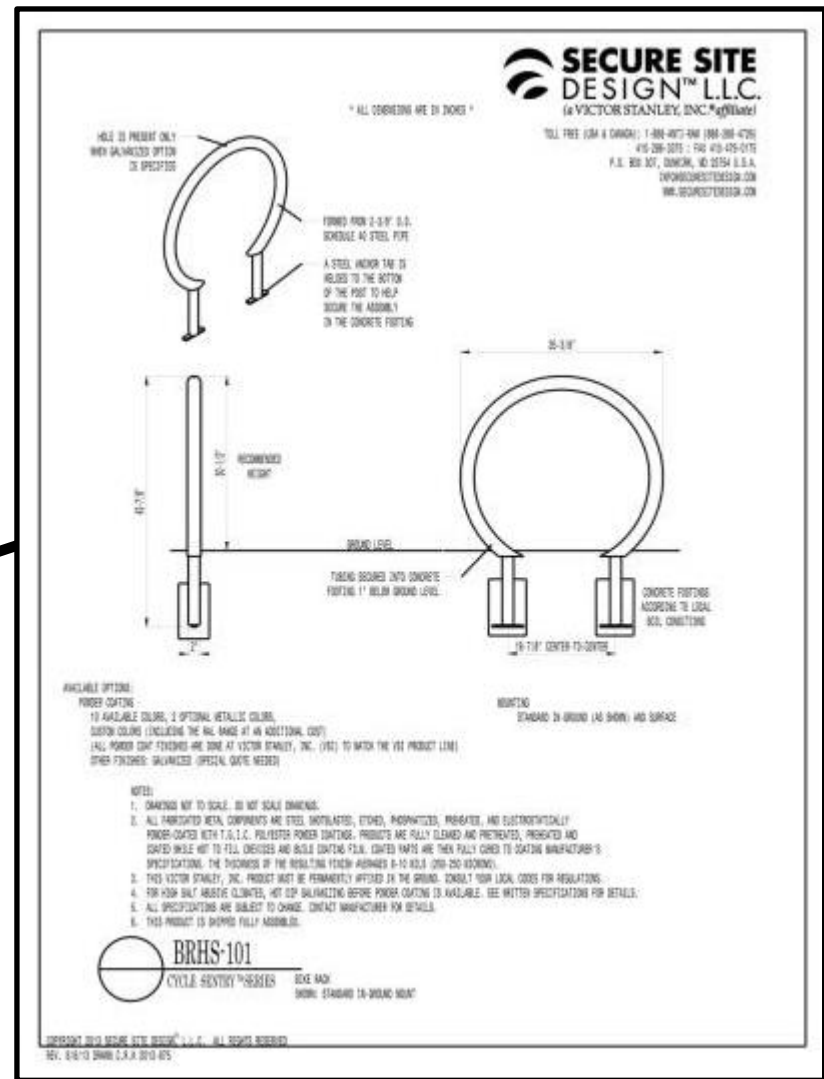
# Security Perimeter Fencing



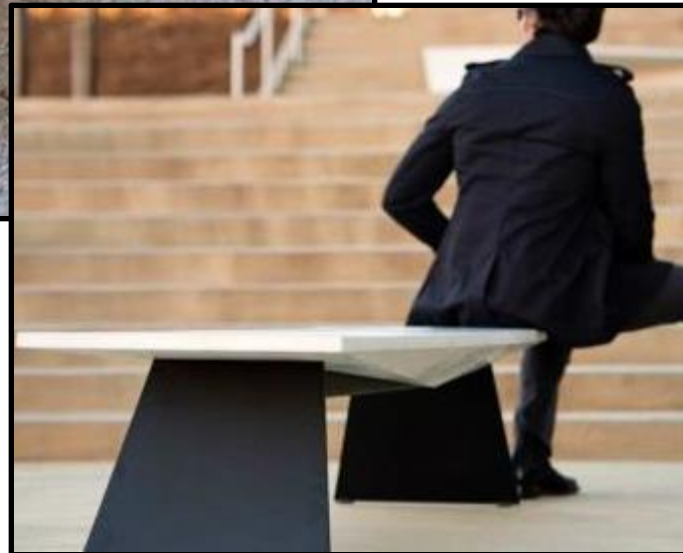




# Bicycle Facilities: Bike Racks



# Bus Canopy Benches/Waste Receptacles





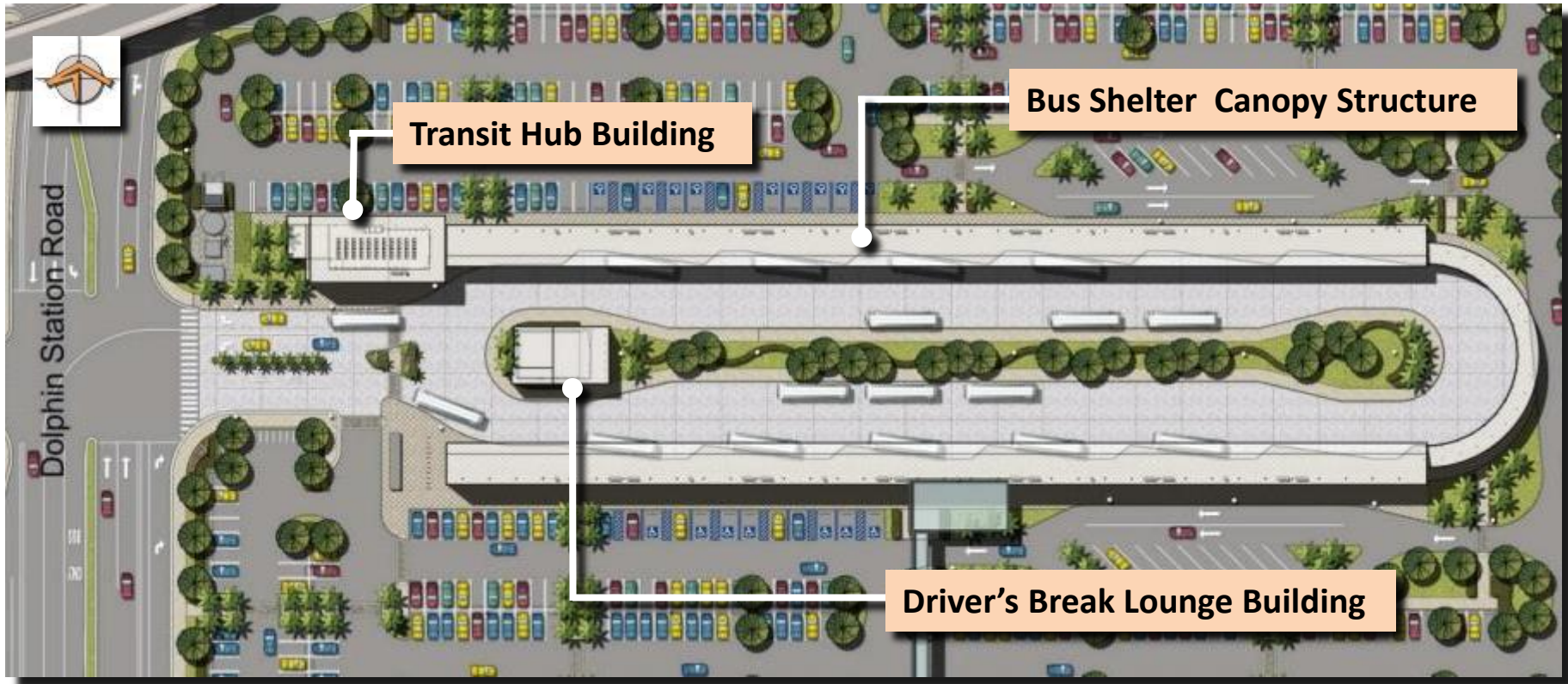
# Pylon Sign



# STRUCTURE DESIGN ELEMENTS



# Structure Locations



# General Considerations on Materials and Finishes

- Design Criteria Package Guidance:
  - Appearance
  - Safety
  - Weather ability
  - Durability
  - Maintainability
  - Heat Control
  - Repair and Replacement Ease

# Driver's Break Lounge Building West Elevation

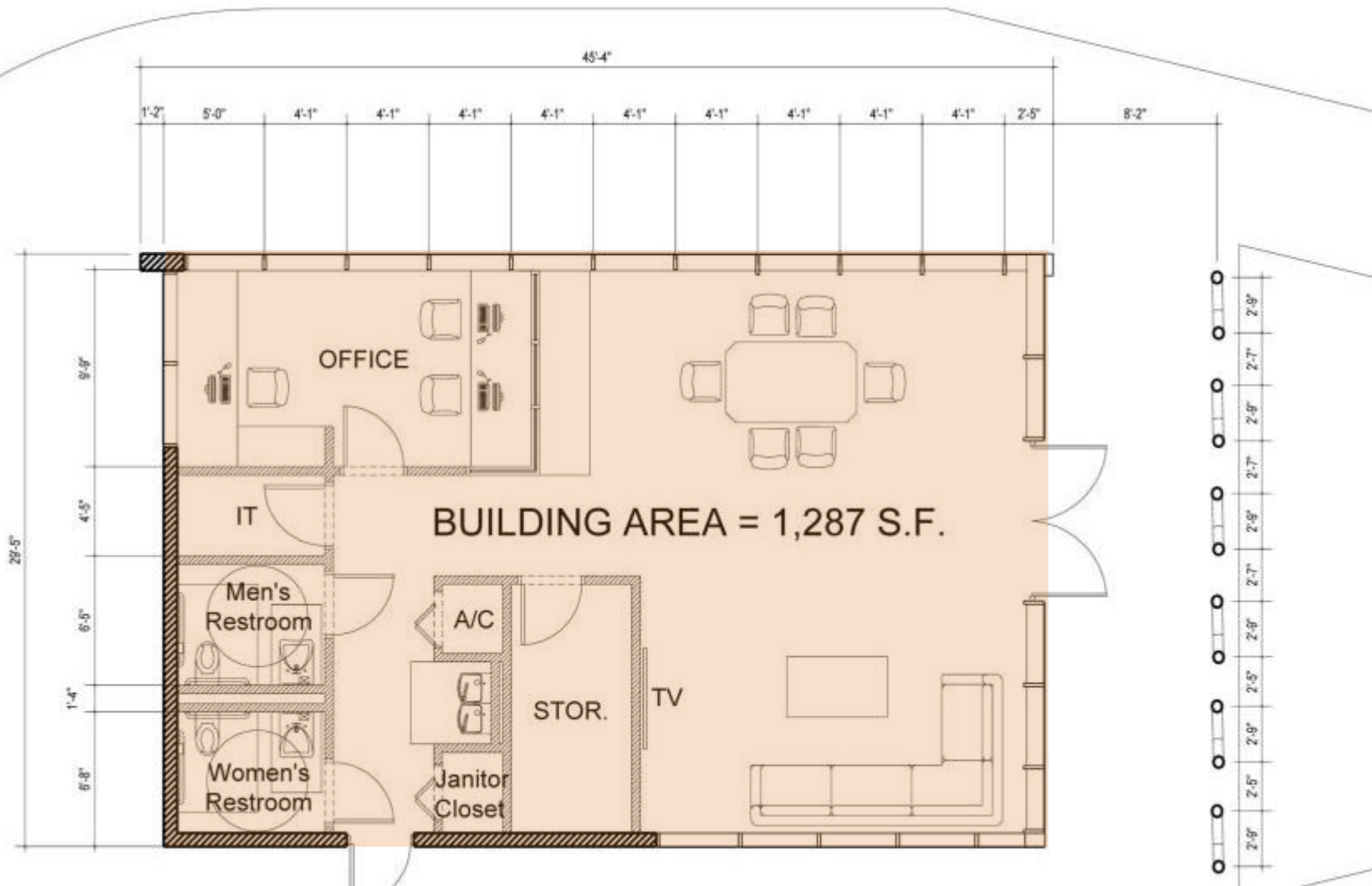




# Driver's Break Lounge Building South Elevation



# Driver's Break Lounge Floor Plan



# View of Transit Hub Building from Entry





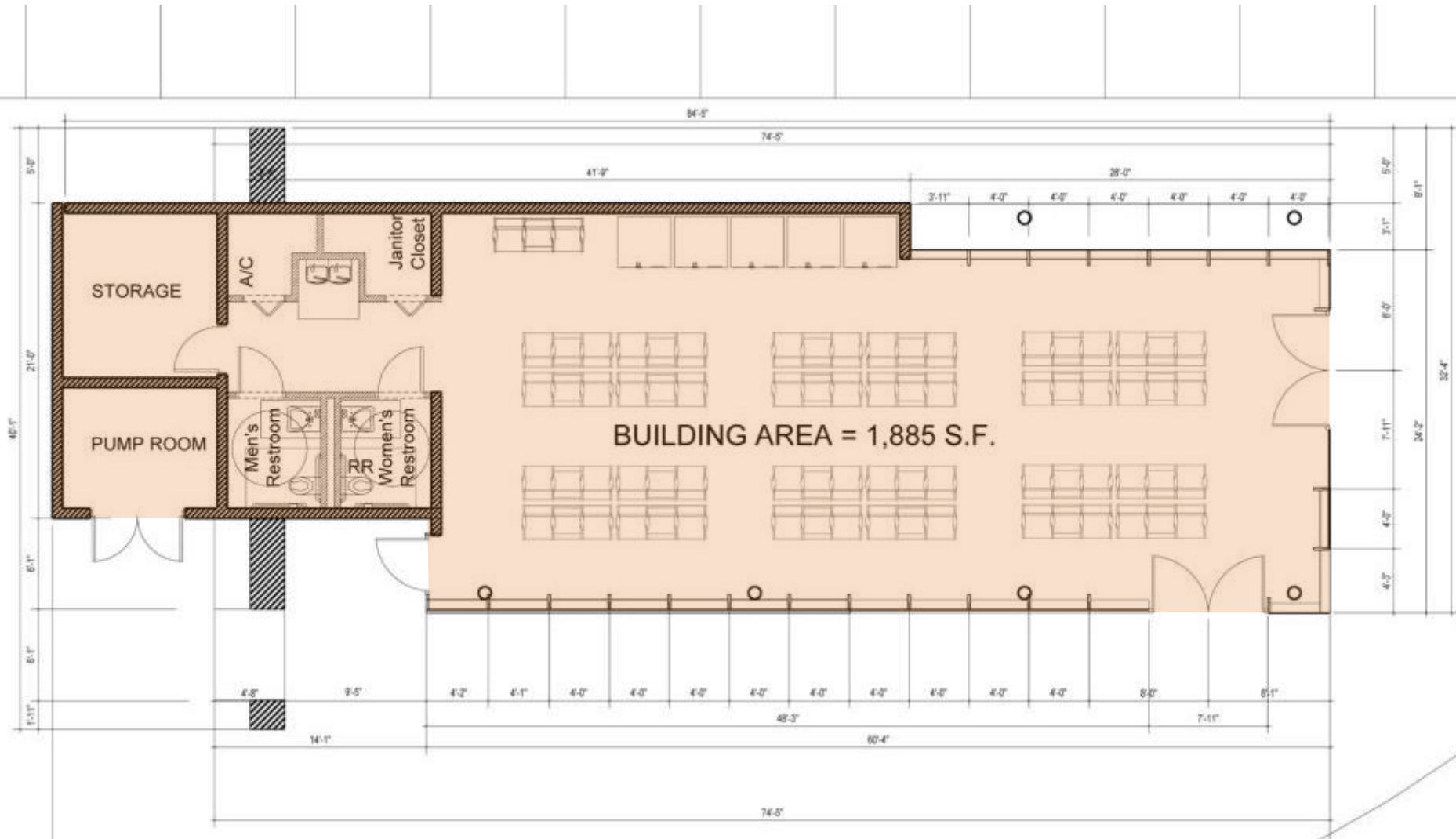
# Transit Hub Building South Elevation



# Transit Hub Building East Elevation



# Transit Hub Building Floor Plan

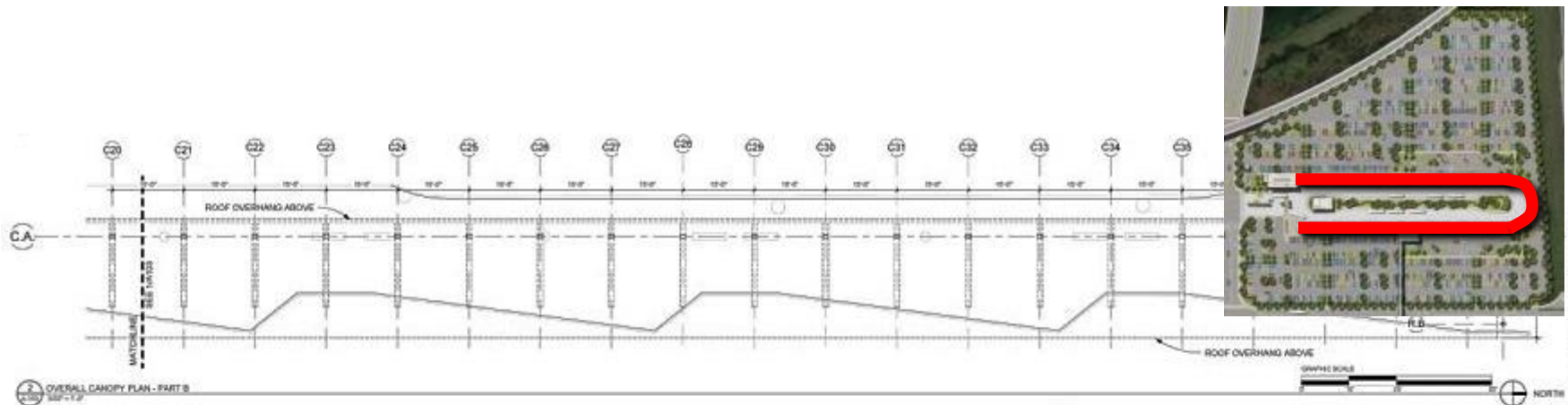




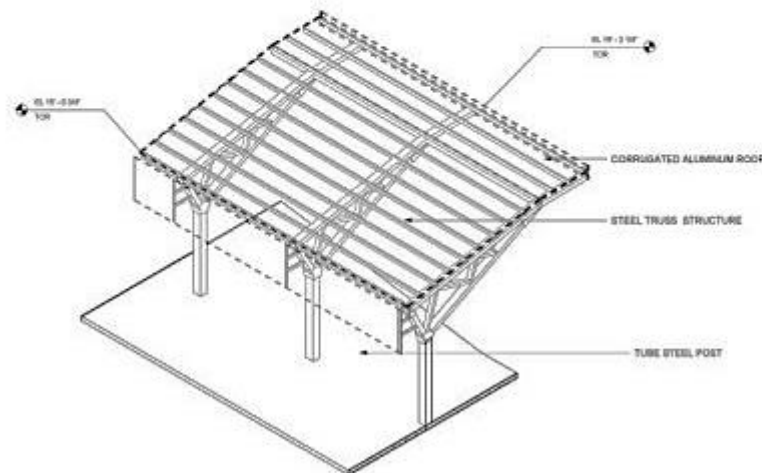
# View of Bus Shelter Canopy: Eastern Bend Area



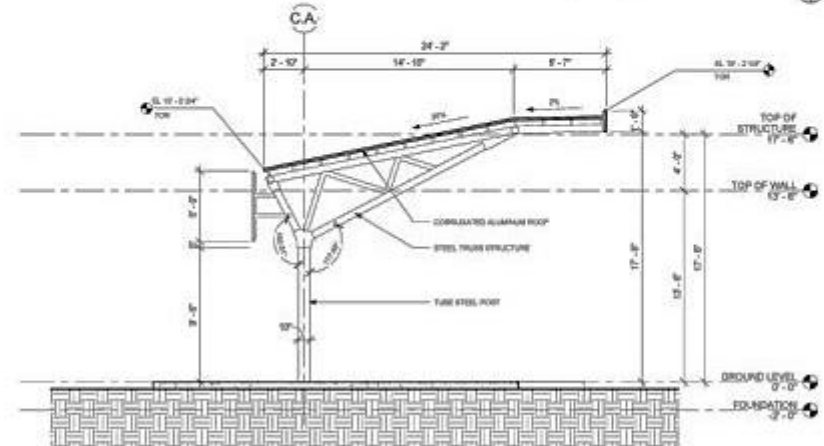
# Bus Platform Canopy Structure



2 OVERALL CANOPY PLAN - PART B  
1/8" = 1'-0"

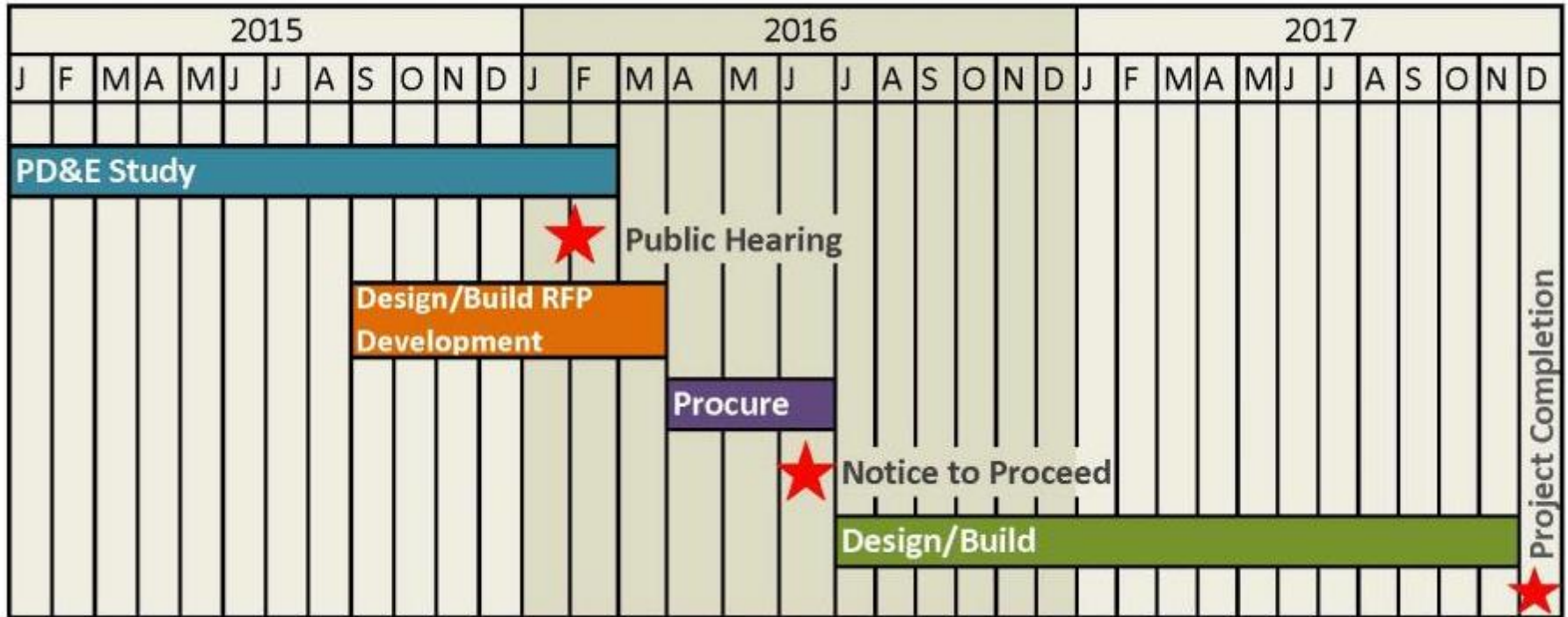


4 CANOPY ISOMETRIC SECTION  
1/8" = 1'-0"



3 CANOPY SECTION  
1/8" = 1'-0"

# Dolphin Station Delivery Schedule





# Comments - Questions



# Dolphin Station Park-and-Ride/Transit Terminal Facility Miami-Dade County, Florida



**Transportation Aesthetics Review Committee  
(TARC)  
January 6, 2016**

